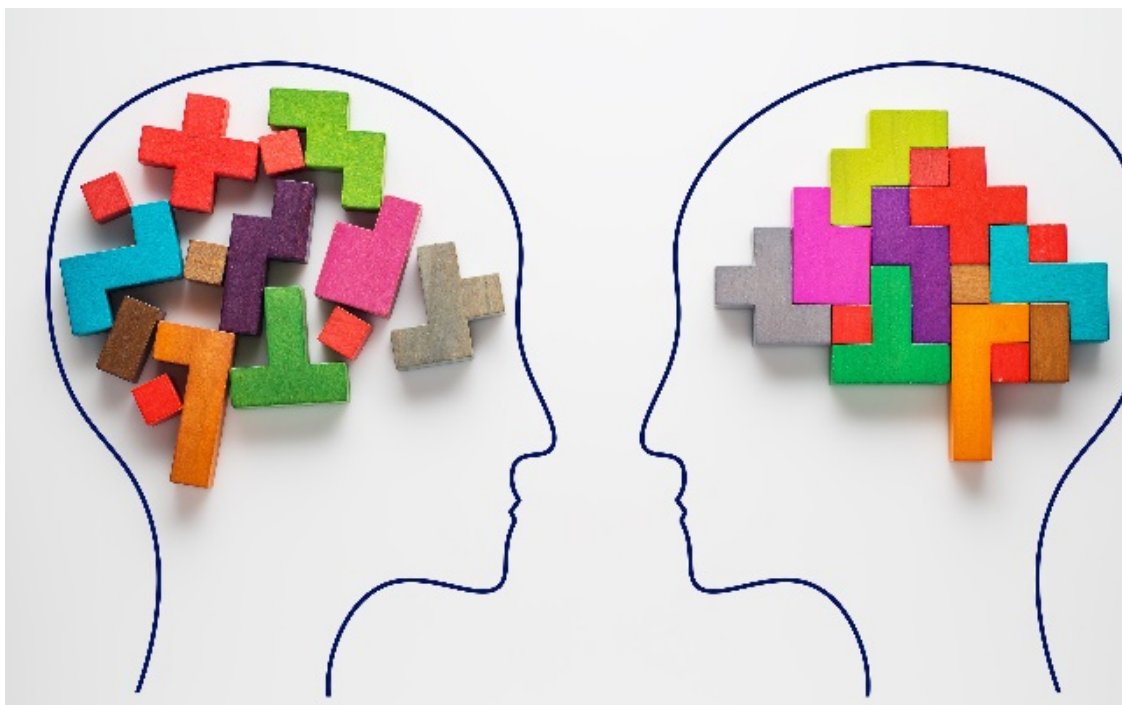




Welcome to the Third Edition of Edwisely Newsletter!

Trending in Education: Psychometric Analysis for assessing Employability of Freshers



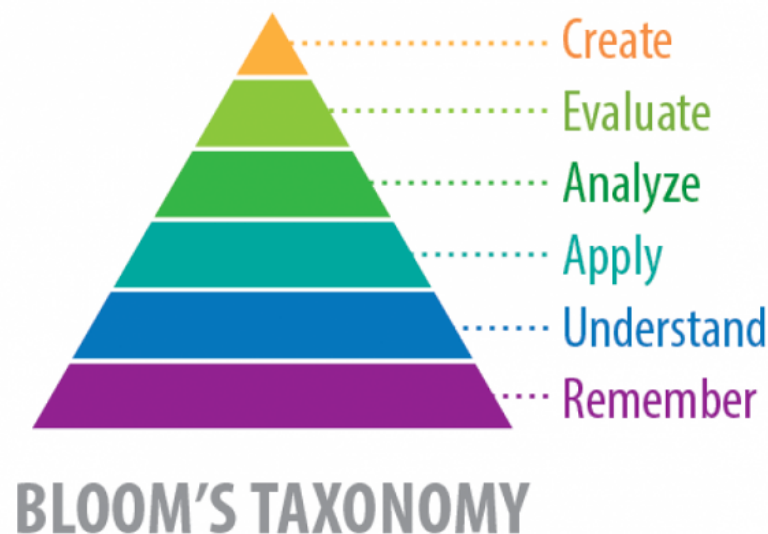
Psychometric Test is a holistic method implemented to measure not only your IQ, but also your EQ, so as to understand your potential based on ability, personality and interests. In general, Psychometric Tests are designed to measure your level of abstract reasoning, verbal, and numerical knowledge which is applicable in job interviews as well as

school/university selection etc.

Psychometric tests have become an effective tool in assessing if a candidate is a good fit for the job. The test helps in evaluating a candidate's potential based on his/her motivation, values, and reactions to the environment. It helps the employer in determining objectively the type of person that they may potentially hire, based on ability, personality, and interests.

The response of the candidates to the tests helps employers predict how the candidate will respond to different work-related activities, and thereon, measure how suitable they are for the role.

Trending at Edwisely: Bloom's based Assessments



Bloom's taxonomy is a set of three hierarchical models used to classify educational learning objectives into levels of complexity and specificity. The three lists cover the learning objectives in cognitive, affective and sensory domains. The cognitive domain list has been the primary focus of most traditional education and is frequently used to structure curriculum learning objectives, assessments and activities.

Edwisely has designed an assessment system with adaptive technology. We use Bloom's to classify the level of difficulty of the questions and then the results are analyzed to determine the level of understanding of the student in a topic. Contrary to traditional assessments, this test determines the appropriate understanding level of the student and provides relevant feedback. This helps the student understand their areas of strength and scope of improvement, with remedial feedback for improving their learning.

News from Edwisely:



Collaboration with MIT:

After relentless hours of hardwork and tons of research invested in making a pristine learning experience platform, we landed the biggest opportunity of our life, a Research Collaboration with Massachusetts Institute of Technology (MIT). The team is delighted to get validation of our innovative learning model from an established University like MIT. We take immense pride in working directly with the researchers at MIT Crosslinks on mapping the engineering concepts and creating The Engineering Knowledge Graph(EKG). It has been a tremendous learning experience for the last few months. We are excited to share our model to students in the coming weeks.

Gearing up for Product Launch:

Edwisely is getting everything set for product launch, scheduled in the next couple of weeks. We are extremely excited to share this news with all of you. The team is working round the clock without any breaks to deliver a seamless product to the users. With energies running high and launch so close, we are eagerly waiting to see the response of the market.

About Edwisely:

Edwisely is an Edu-technology, that enables engineering students learn faster, more efficiently, and have fun.

Edwisely envisions to be at the pinnacle of continuous learning and assessment platforms. With efficient learning methods and connectivity modules, we strive to become a pioneering education ecosystem.

Sincerely,
Team Edwisely

<https://www.edwisely.com/>

Please feel free to share this newsletter with your faculty.


The content of this email is confidential and intended for the recipient specified in message only. It is strictly forbidden to share any part of this message with any third party, without a written consent of the sender. If you received this message by mistake, please reply to this message and follow with its deletion, so that we can ensure such a mistake does not occur in the future.



[View this email in your browser](#)

You are receiving this email because of your relationship with Edwisely. Please [reconfirm](#) your interest in receiving emails from us. If you do not wish to receive any more emails, you can [unsubscribe here](#).

Edwisely Office 819, Manjeera Majestic Commercial, Kukatpaly, Hyderabad, Telangana 500072, India

 [Unsubscribe](#) | [Manage Subscription](#) | [Forward Email](#) | [Report Abuse](#)

